

SECTION 1

Description FRAME GROUP, MAIN

Used On 911B

[illegible]

Page No.	Description	Group No.	Code
1	FRAME GROUP, MAIN	911-2906163	2967
2			
3			
4			
5			
6			
7			
8			
9			
10			

Beginning Serial 911B0489 Ending Serial

Supercedes _____ Superceded By _____

GIVE MACHINE SERIAL NUMBER WHEN ORDERING PARTS

Issue Date 06/13/77

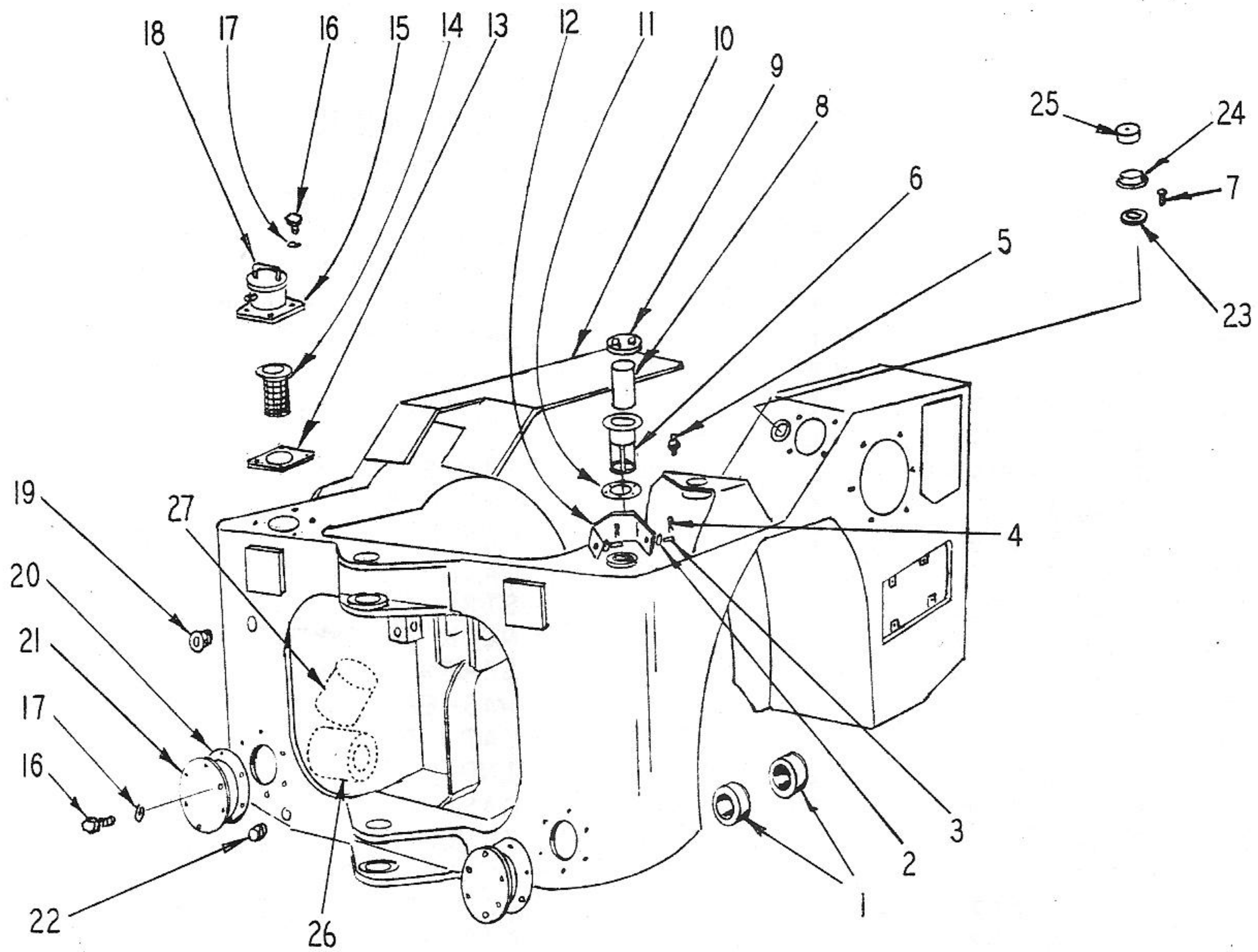
By PF Ckd. MBA

Group No. 911-2906163

INDEX

1-2-2

[illegible]





911-2906163 ★

FRAME MAIN GROUPE 08/21/78ITEMS SHOWN
IN FIG. 1

<u>ITEM</u>	<u>PART NO.</u>	<u>QUAN.</u>	<u>DESCRIPTION</u>
1	GGB648	2	BUSHING
2	W3GA	2	WASHER, FLAT
3	HRA2	2	PIN
4	L101	2	PIN, COTTER
5	P1FG	1	FITTING, GREASE
6	103-08022	1	NECK, FILLER
7	T2GL6	12	SCREW, MACHINE
8	103-08183	1	SLEEVE, INNER
9	103-08177	1	CAP
10	911-2903442	1	FRAME MAIN REAR
11	SGA33A	1	DELTETE
12	911-51024	1	COVER
13	SGA25C	1	GASKET
14	919-300010	1	STRAINER
15	920-300166	1	NECK ASSEMBLY
16	T6GG16	16	SCREW, CAP
17	W6GF	16	WASHER, LOCK
18	920-300165	1	CAP, FILLER
19	016-30022	1	INDICATOR, OIL
20	911-52008	2	GASKET
21	911-52007	2	COVER
22	P5FPA	2	PLUG, PIPE
23	105-01012	1	GASKET, FILLER NECK
24	911-30003	1	CAP
25	VFA4	1	NECK, FILLER
26	VFA220	1	STRAINER, SUCTION
27	VYA106	1	DIFFUSER

LEGEND:

SOLD ONLY AS AN
ASSEMBLED UNIT.SOLD ONLY AS A KIT
OR MATCHED SET.SOLD AS AN ASSEMBLED UNIT.
SERVICEABLE PARTS OF THIS ASSEMBLY ARE SHOWN
SEPARATELY UNDER THE ASSEMBLY NUMBER.NOT SOLD AS AN ASSEMBLED UNIT.
SERVICEABLE PARTS OF THIS ASSEMBLY ARE SHOWN
SEPARATELY UNDER THE ASSEMBLY NUMBER.**GIVE MACHINE SERIAL NUMBER WHEN ORDERING PARTS**

911-2906163

1-2-2

Page 1 of 1

2967

SECTION 1

Group No. 911-2986819

Description	BODY PARTS

Used On 911B

[illegible]

Page No.	Description	Group No.	Code
1	BODY PARTS	911-2986819	
2			
3			
4			
5			
6			
7			
8			
9			
10			

Beginning Serial 911B2051 Ending Serial _____

Supercedes _____ Superceded By _____

GIVE MACHINE SERIAL NUMBER WHEN ORDERING PARTS

Issue Date 5-21-80

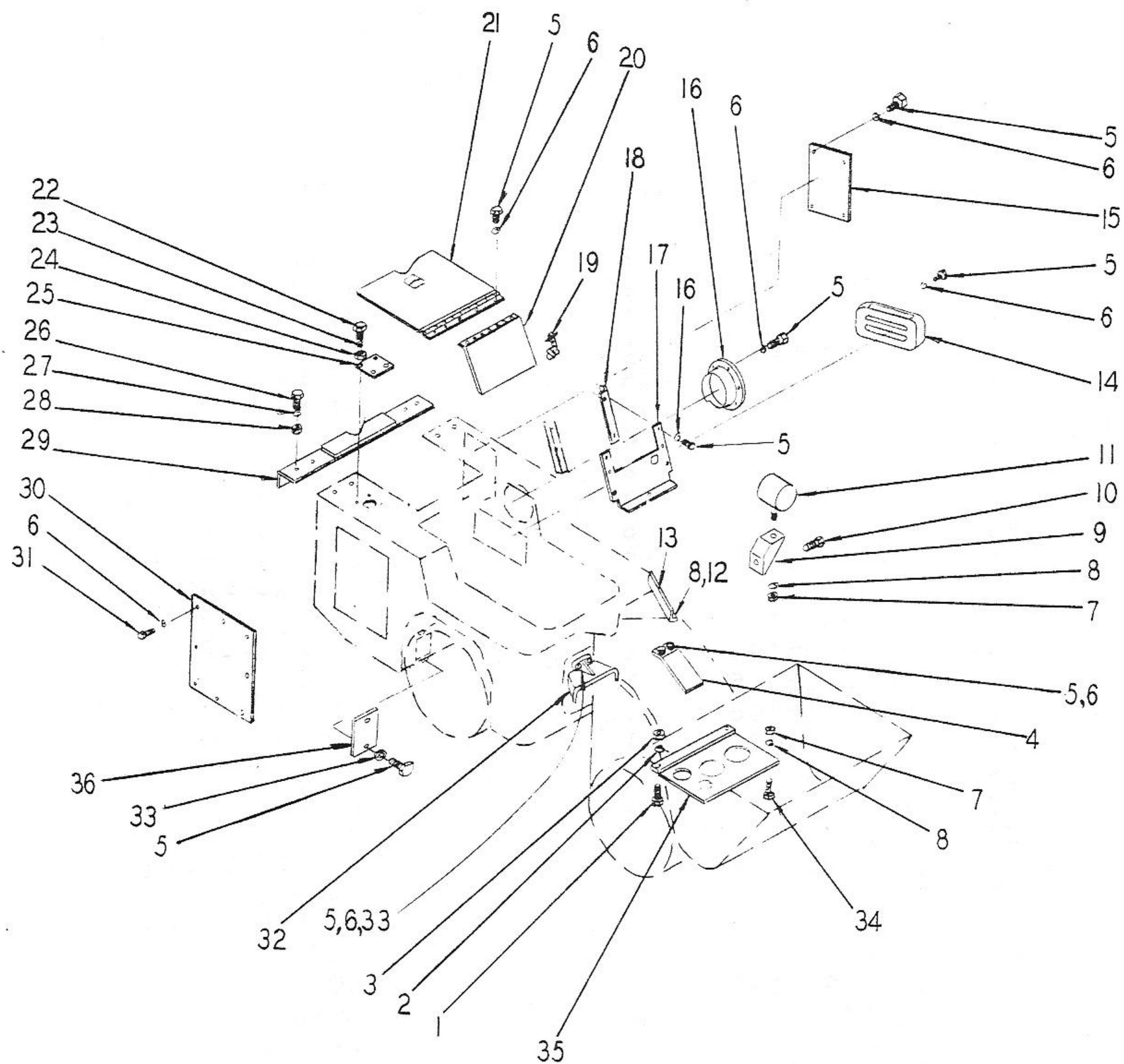
By SHARP Ckd.

Group No. 911-2986819

INDEX

1-2-3

[illegible]





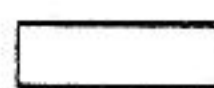
911-2986819



BODY PARTS GROUP (MAIN)

ITEM	PART NO.	QTY.	DESCRIPTION
1	T16GG52	2	SCREW, CAP
2	W16GF	2	WASHER, LOCK
3	T16GG	2	NUT
4	911-56005	1	COVER
5	T6GG16	28	SCREW, CAP
6	W6GF	34	WASHER, LOCK
7	T12GG	4	NUT
8	W12GF	6	WASHER, LOCK
9	911-53040	2	BRACKET, FRONT LIGHT
10	T8GG16	6	SCREW, CAP
11	911-53048	2	GUARD, HEADLIGHT
12	T12GG20	2	SCREW, CAP
13	911-80002	1	ANGLE, SHIPPING
14	911-2905298	1	COVER PLATE
15	911-2906015	1	COVER PLATE
16	911-2905306	1	INLET AIR-ENGINE
17	911-2905025	1	COVER FRONT-ENGINE
18	911-2905843	2	BRACKET
19	HKA33	2	LATCH
20	911-2905017	1	COVER FRONT-ENGINE
21	911-2986744	1	HOOD, ENGINE
22	T5GG16	4	SCREW, CAP
23	W5GF	4	WASHER, LOCK
24	T5GG	4	NUT
25	911-2906148	1	COVER PLATE
26	T8GG20	4	SCREW, CAP
27	W8GF	4	WASHER, LOCK
28	T8GG	4	NUT
29	911-2986603	1	BRACKET, REAR ENGINE
30	911-2905280	1	COVER PLATE
31	T6GG20	8	SCREW, CAP
32	911-2008191	1	SHIELD (DRIVELINE)
33	W6GA	4	WASHER, FLAT
34	T12GG44	2	SCREW, CAP
35	911-52043	1	PAN, BELLY
36	911-2907153	1	COVER

LEGEND:

X SOLD ONLY AS A KIT
OR MATCHED SET★ SERVICEABLE PARTS OF THIS ASSEMBLY ARE SHOWN
SEPARATELY UNDER THE ASSEMBLY NUMBER

GIVE MACHINE SERIAL NUMBER WHEN ORDERING PARTS

911-2986819

REV. _____

1-2-3

PAGE 1 OF 1

EFFECTIVE SER. _____